

# UBK 685

## Experience™ Series

# UPRIGHT BIKE

### Product Features

#### 1. P82 Touchscreen Console Connects to Apple Watch\*

The P82 console offers a brilliant 15 inch screen that's ergonomically positioned to deliver crystal clear entertainment viewing for exercisers in motion. When networked, it is also a direct-to-exerciser communication portal allowing you an opportunity to build your brand, share information about activities and services, and strengthen the sense of community within your facility. Available with the optional Precor Smart Watch Connector for Apple Watch®.

#### 2. Over-molded Handlebars

The over-molded style adds comfort and durability while offering dual heart rate contacts and three ergonomic riding positions: upright, cruising, and road.

#### 3. Seat Adjustment and Improved Saddle Design

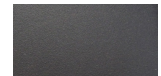
The intuitive pop pin seat adjustment allows users to easily change seat height.

#### 4. Pedals

The extra wide pedals comfortably accommodate feet of all sizes and feature integrated, adjustable straps to ensure proper pedaling form.

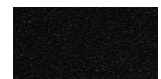
#### 5. Ease of Maintenance

The easy-to-remove shrouds ensure quick access to the belt-drive system for maintenance and servicing without removing the pedals or crank arms.



Storm Grey

Refined colorways with dark Tungsten covers and two frame color options, Storm Grey and Black Pearl.



Black Pearl

### Specifications

**Dimensions (L x W x H):** 43 x 21 x 59 in / 109 x 53 x 150 cm

**Product Weight:** 144 lb / 65 kg

**Power:** 120 volt, 15 amp circuit

**Total Workouts:** 12

**Resistance Levels:** 25

**Minimum Watts:** 22 (level 1 at 20 RPM)

**Maximum Watts:** 500 (level 25 at 150 RPM)

**Languages:** English, Danish, Dutch, French, Finnish, German, Italian, Japanese, Korean, Norwegian, Polish, Portuguese, Russian, Simplified Chinese, Spanish, Swedish, Traditional Chinese, Turkish



Apple Watch is a trademark of Apple Inc., registered in the U.S. and other countries and regions.

**Console Features:** 15 in / 38.1 cm LCD Capacitive Touch Screen with mobile device charger, audio jack and optional Smart Watch Connector for Apple Watch®

**Network Capabilities:** Preva® network capable

**Accessories:** Reading Rack, Water Bottle Holder  
Optional - Cable Management

**Warranty:** Visit [www.precor.com](http://www.precor.com) for warranty terms.