

TRM 681

Experience™ Series

TREADMILL

Product Features

1. P82 Touchscreen Console Connects to Apple Watch*

The P82 console offers a brilliant 15 inch screen that's ergonomically positioned to deliver crystal clear entertainment viewing for exercisers in motion. When networked, it is also a direct-to-exerciser communication portal allowing you an opportunity to build your brand, share information about activities and services, and strengthen the sense of community within your facility. Available with the optional Precor Smart Watch Connector for Apple Watch®.

2. Commercial-Grade Drive and Lift Motor

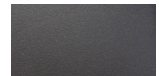
The TRM 681 is equipped with a commercial-grade 3 HP high-efficiency AC-motor drive (4.3 HP peak) that enhances performance, efficiency, and reliability to deliver a treadmill that is ideal for dues-paying commercial fitness facilities as well as hospitality venues, multi-family housing complexes, corporations and municipal service organizations.

3. Integrated Footplant Technology™

Recognizes the exerciser's natural foot speed and matches every stride for an ultra-smooth feel that enhances their workout experience.

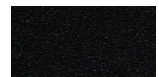
4. Ground Effects® Impact Control System

Our patented system combines ideal cushioning, support, and stability for exercisers. Precor decks are designed to provide more absorption in the front where the exerciser's feet hit the belt and added rigidity at the back for a firm push-off.



Storm Grey

Refined colorways with dark Tungsten covers and two frame color options, Storm Grey and Black Pearl.



Black Pearl

Specifications

Dimensions (L x W x H): 83 x 35 x 62 in / 211 x 89 x 157.5 cm

Product Weight: 392 lb / 179 kg

Step-up Height: 8.4 in / 21.3 cm

Handrail Length: 18 in / 46 cm

Running Surface: 60 x 22 in / 152 x 56 cm

Power: 120 volt, 20 amp individual branch circuit

Total Workouts: 27

Elevation Range: 0% to 15% incline in 0.5% increments

Speed Range: 0.5 - 12 mph / 0.8 - 19.2 km/h

Motor Drive: 3 HP high-efficiency AC-motor (4.3 HP peak)

Languages: English, Danish, Dutch, French, Finnish, German, Italian, Japanese, Korean, Norwegian, Polish, Portuguese, Russian, Simplified Chinese, Spanish, Swedish, Traditional Chinese, Turkish



Apple Watch is a trademark of Apple Inc., registered in the U.S. and other countries and regions.

Console Features: 15 in / 38.1 cm LCD Capacitive Touch Screen with mobile device charger, audio jack and optional Smart Watch Connector for Apple Watch®

Network Capabilities: Preva® network capable

Accessories: Integrated Reading Rack
Optional - Cable Management

Warranty: Visit www.precor.com for warranty terms.