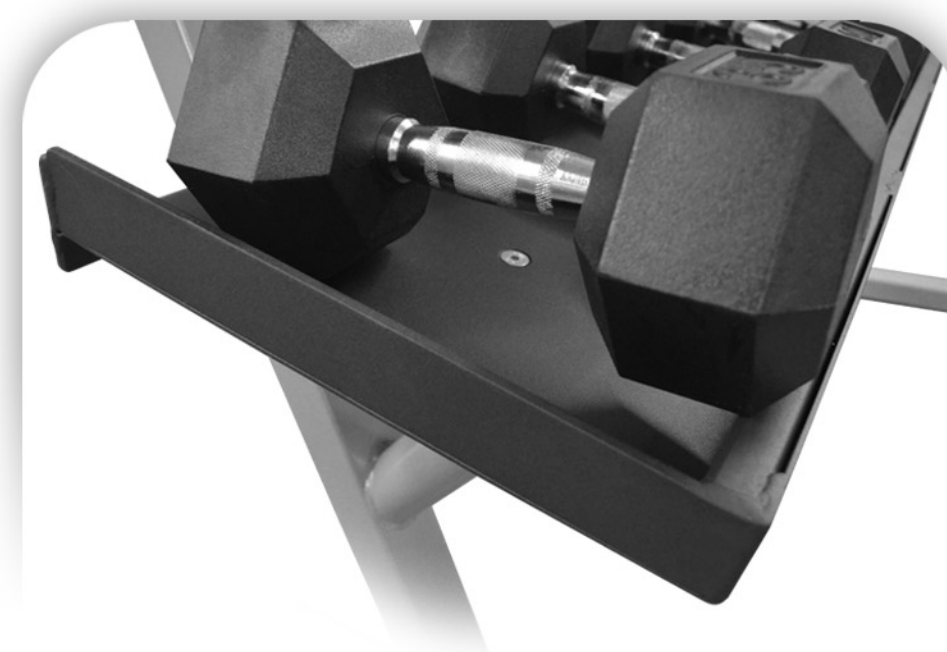




INFLIGHT FITNESS

5009

54" 3-Tier Dumbbell Rack



FEATURES

- ✓ The three heavy duty tray shelves of this commercial grade rack system are properly spaced and angled for the easy removal and storage of a variety of dumbbells or kettle bells.
- ✓ One inch tube front edge protects rubber dumbbells.
- ✓ The rack feet are drilled for bolting down and have rubber pads to protect the floor.
- ✓ 54.5"L x 35.5"W x 45"H and 254lb. shipping weight.

OPTIONS

- ✓ Available with 10 pair set of 5-50lb. rubber hex dumbbells (5009-550). Or 13 pair set including additional 3lb., 8lb., and 12lb dumbbells (5009-598).

Visit www.inflightfitness.com to see our entire line of exercise equipment.

Limited lifetime warranty on frame and welds. Two year limited warranty on hex rubber dumbbells.