



INFLIGHT FITNESS

5007-2

69" 2-Tier Dumbbell Rack

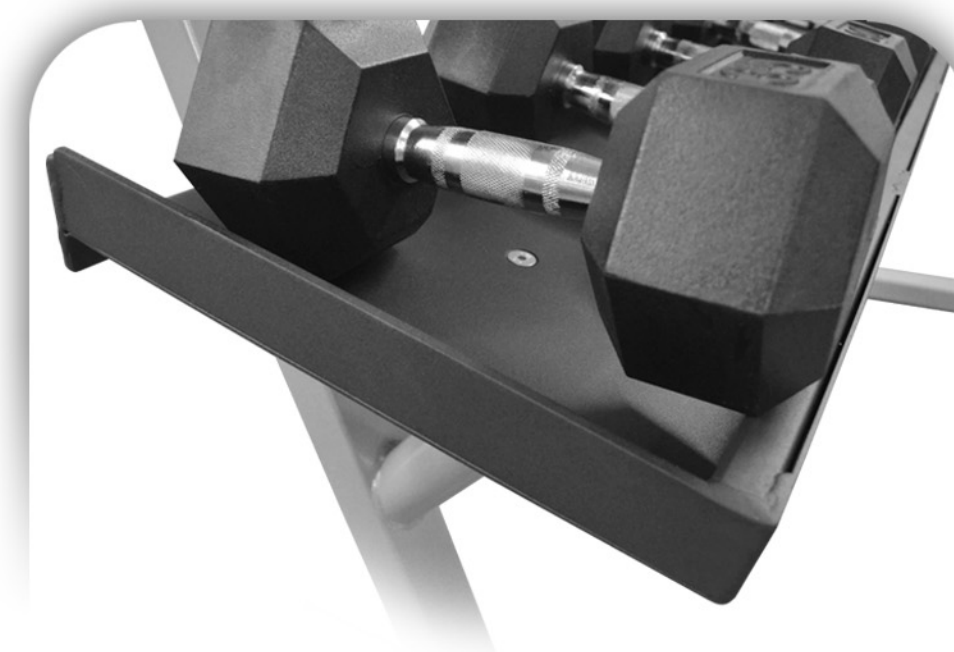


FEATURES

- ✓ The two heavy duty tray shelves of this commercial grade rack are properly spaced and angled for the easy removal and storage of a variety of dumbbells or kettle bells.
- ✓ One inch tube front edge protects rubber dumbbells.
- ✓ The rack feet are drilled for bolting down and have rubber pads to protect the floor.
- ✓ 69.5"L x 35.5"W x 45"H and 204lb. shipping weight.

OPTIONS

- ✓ Third tray available for an additional five pair 55-75lb. hex dumbbells or kettle bells.
- ✓ Available with 10 pair set of 5-50lb. rubber hex dumbbells (5007-2-550).



Visit www.inflightfitness.com to see our entire line of exercise equipment.

Limited lifetime warranty on frame and welds. Two year limited warranty on hex rubber dumbbells.